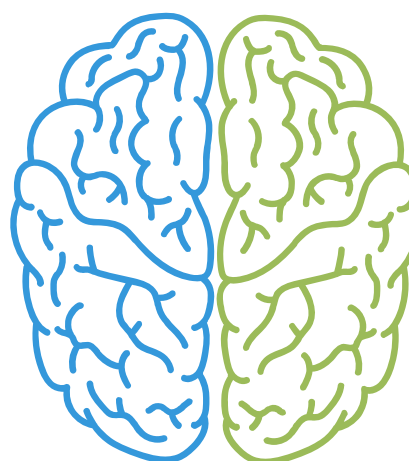




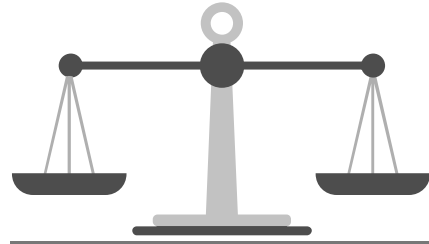
WHAT IS OPEN SOURCE INTELLIGENCE?

Data collected from publicly available sources to be used in an intelligence context. "Open" refers to overt, publicly available sources.



QUESTION OF LAW OR FACT?

Think like an **investigator**, not a **lawyer**.



ATTORNEY'S NEED FOR OPEN SOURCE INTELLIGENCE ("OSINT")



IDENTIFY AND LOCATE PEOPLE

You may need to identify or locate relevant people, or simply learn more about them.



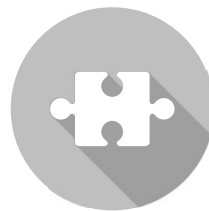
ASSET SEARCH

You may need to determine if a person or business entity has assets (before you initiate a lawsuit against them).



DUE DILIGENCE RESEARCH

You may need to perform due diligence research on potential clients or business partners.



KNOWLEDGE GAPS OR VERIFY INFORMATION

You may simply need to fill in knowledge gaps or verify information you were told.

CATEGORIES OF OSINT



Internet



Public Records



News & Media

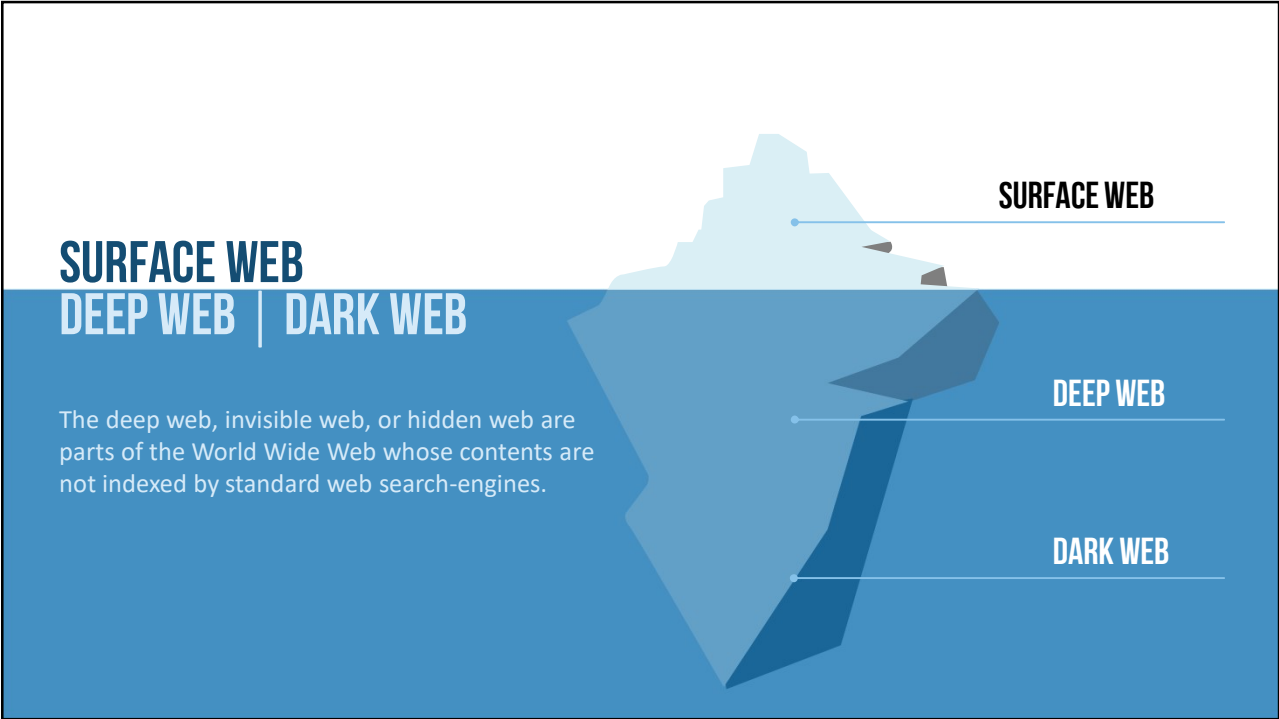


Maps &
Satellite Imagery






Photography





SEARCH ENGINES VS. DIRECTORIES

 <p>“Search Engines” and “Directories” are both tools that help us locate information on specific topics from other websites.</p>	 <p>“Search Engines” search the content of Web pages to retrieve results relevant to the keywords we enter into their search boxes.</p>	 <p>“Directories” are comprised of website links that are hand selected by people who are (usually) subject specialists.</p>
--	---	--

GOOGLE OPERATORS

"" QUOTES	AND	OR	- MINUS SIGN
Exact words in exact order	Search engines ignore the word "and" when lower-case because it is too common to log.	Search engines ignore the word "or" when lower-case because it is too common to log.	A minus sign immediately before a word tells the search engine that you do not want pages containing the word.
* ASTERISK	~ TILDE	AROUND(N)	_ UNDERSCORE
Wildcard	A tilde immediately before a word instructs the search engine to also search for synonyms of the word.	Used to designate the proximity of two search terms. A search for "Robert AROUND(2) Jones" locates pages where the terms are within 2 words of each other.	Including an underscore between two words instructs the search engine to locate pages where the words are directly connected.

OTHER SEARCH ENGINES

- ▲ USA.gov
- ▲ Duck Duck Go
- ▲ Bing
- ▲ Yahoo
- ▲ Excite
- ▲ Lycos
- ▲ Dogpile
- ▲ Yippy
- ▲ Google Scholar



ARCHIVED INTERNET

Finding Websites That Have Been Taken Down

The screenshot shows the Wayback Machine interface. At the top, there are navigation links: ABOUT, CONTACT, BLOG, PROJECTS, HELP, DONATE, JOBS, VOLUNTEER, PEOPLE. A search bar is on the right with the text "SIGN IN" and "UPLOAD". The main content area features the Wayback Machine logo and a search input field containing "https://www.msbar.org/". Below the search bar, there are links for "Calendar", "Collections", "Changes", "Summary", and "Site Map". A bar chart shows the number of times the website was saved over time, with a peak in 1997. Below the bar chart is a calendar for the year 1997, with the date April 18, 1997, highlighted in blue.

ARCHIVED INTERNET

Mississippi Bar Association's Website on April 18, 1997

Welcome to the Mississippi Bar's Web Site!



[\[ABOUT THE BAR\]](#) [\[ETHICS & PROFESSIONALISM\]](#) [\[BAR PUBLICATIONS\]](#) [\[MEMBER BENEFITS\]](#) [\[MEETINGS, EVENTS & CLE\]](#) [\[SERVICES FOR THE PUBLIC\]](#) [\[BAR DIRECTORY\]](#) [\[THE COURTS\]](#)

The Mississippi Bar is a statewide organization of all lawyers licensed to practice law in Mississippi. It exists to serve Mississippi lawyers and the public. Information about the services of The Mississippi Bar and the legal system can be accessed via this site.

E-Mail: msbar@msbar.org
643 North State St., P.O. Box 2168, Jackson, MS 39225
Telephone (601) 948-4471 - Facsimile (601) 355-8635

Copyright 1997 The Mississippi Bar
All Rights Reserved

FINDING PEOPLE



FINDING PEOPLE

- True People Search
- Licensing Agencies
 - ▲ Professional License
 - ▲ Driver's License
- White Pages
- "Old School" 411
- Obituaries
- Social Media
- Private Databases
- Tax Assessor's Records
- Credit Headers

IMPORTANCE OF IDENTIFIERS

- False Positives
- Address History
- Date of Birth
- Alias | Maiden Names
- Name Variations
- Email Address
- User Name
- Employer
- Social Security Number
- County of Residence

PUBLIC RECORD DIRECTORIES



“PUBLIC” DOES NOT NECESSARILY MEAN
“AVAILABLE ONLINE,” “EASY TO OBTAIN,” OR “FREE.”



PUBLIC RECORDS

Available in a Variety of Forms



Electronic
vs.
Paper



Free | Freemium
vs.
Subscription



Specific Sources
vs.
Aggregators

PUBLIC RECORD DIRECTORIES

- Search Systems
- NETR Online
- BRB
- Law Enforcement Directory
- Online Searches
- Portico
- Black Book Online

SEARCHSYSTEMS.NET

SearchSystems.net

Home Blog Videos Guides Latest Resources Contact

FREE PUBLIC RECORDS



Welcome to Search Systems, your guide to Free Public Records. We're a family-owned business established in 1990 that has worked since 1996 to take the guesswork out of finding public record information online. We've personally located, analyzed, described, and organized links to over 70,000 databases by type and location to help you find property, criminal, court, birth, death, marriage, divorce records, licenses, deeds, mortgages, corporate records, business registration, and many other public record resources quickly, easily, and for free.

Search Free Public Records

In a State By Type of Record In a County By City By Zipcode Nationwide In Other Countries

Select a State

View statewide, county, and city records, state licenses, or search by category (court records, property, corporations, etc.) for that state.

Free public record databases are priced right and give you current and accurate information right from the source. But you can only search one city, county, or state at a time. Our Premium databases help you save time and find more records as you can expand to statewide or nationwide searches for a small fee.

Premium Databases

Criminal Records

Do a comprehensive background search of over 500 million court, inmate, corrections, offender, and fugitive records.

Bankruptcies-Judgments-Liens

Search over 100 million records nationwide by Individual Name, Business Name, or SSN/Tax ID.

National Security Search

Search over 75 terrorist, designated national, denied person, money laundering, and broker discipline databases at once.

Tenant Screening/Evictions

Manage your risks and save time looking for court eviction records. Use this database to find them for you.

SearchSystems.net

Home Blog Videos Guides Latest Resources Contact RSS

Search Free Public Records



Free Public Records at SearchSystems.net → United States Free Public Records by State → Mississippi Public Records → Mississippi Counties Free Public Records → Madison County

Mississippi Counties
Mississippi Cities
Mississippi by Topic
Mississippi Licenses

U.S. States
Find a County
Find a City

Search Systems Premium

Criminal Records
Bankruptcies, Judgments, Liens
Tenant Screening

Madison County

Madison County is located in central Mississippi. The County Seat is Canton and the largest city is Ridgeland. The Official Web Site is located at <http://www.madison-co.com/>. The 2014 population estimate is 101,688 and the 2010 census population was 95,203. The land area is 714.51 square miles and there are 133.2 persons per square mile.

57.8% of the population is White, 38.5% is Black or African American, 2.9% is Hispanic or Latino, 2.3% is Asian, 0.4% is American Indian or Alaska Native, 0.1% is Native Hawaiian or Pacific Islander, and 0.8% is two or more races. 89.2% have a high school degree or higher, and 45.8% have a Bachelor degree or higher.

The median home value is \$201,200, there are 36,342 households, an average of 2.63 persons per household. The per capita income is \$33,170, the median household income is \$59,904, and 12.7% of the persons in Madison County are considered below poverty level.

The total number of firms, at last estimate, was 11,036. Retail sales (in \$1000) were \$1,268,437, and sales per capita were \$14,172. The percentage of black-owned firms is 17.5%, and the percentage of women-owned firms is 24.7%.

If you find a broken link below, please use the [Report a Broken Link](#) form to let us know.

Public Records, Libraries, and Schools

Public Records Libraries Schools

Madison County
Official Madison County, Mississippi government website.

Public Records

Car Tags

Find your Madison County car tag by title number or tag number and owner name and pay renewals online.

Court Records | Chancery Pay Site

Mississippi Electronic Courts (MEC) index of Madison County Chancery Court records. Modest annual subscription fee required.

Court Records | Chancery Cases Files

Madison County Chancery Court case records, including birth certificates, divorces and annulments, child custody and support, contracts, estates, judgments, foreclosures, liens, name changes, property, injunctions, and more.

Court Records | Circuit & County Civil Pay Site

Madison County Circuit Court and County Court civil records from the Mississippi Electronic Courts (MEC) system.

	<p>Court Records Circuit & County Civil Pay Site Madison County Circuit Court and County Court civil records from the Mississippi Electronic Courts (MEC) system.</p> <p>Court Records Justice Court Citations Find and pay your Madison County Justice Court citation online.</p> <p>Directory Madison County department directory.</p> <p>Federal Tax Liens Chancery Clerk of Madison County index of federal tax liens filed in the county.</p> <p>Inmates Madison County Detention Center current inmates.</p> <p>Maps Madison County online maps. Includes city maps, ownership, districts, fire response, parcels, zoning maps, etc.</p> <p>Minutes Madison County Board of Supervisors meeting Minutes searchable by keyword or date.</p> <p>Most Wanted Sheriff's Office list of Madison County most wanted.</p> <p>Property Delinquent Taxes Chancery Clerk index of properties that have delinquent taxes due.</p> <p>Property GIS Tri-State Consulting Services, Inc. GIS map database of Madison County property records.</p> <p>Property GIS Madison County Board of Supervisors GIS property search.</p> <p>Property Personal Personal property tax roll by name or PIN from the Madison County Assessor.</p> <p>Property Tax Payments Madison County property and tax records, and online tax payments.</p> <p>Property Tax Rolls Real property tax roll search for Madison County.</p> <p>Recorded Documents Madison County Chancery Clerk land records and recorded documents.</p> <p>Recycling Locations Recycling locations in Madison County.</p> <p>Roads Road registry of county streets and roads.</p> <p>Sex Offenders Find Madison County registered sex offenders.</p> <p>Subdivision Codes Madison County subdivision codes by subdivision name, or search alphabetically.</p> <p>Subdivision Plats Chancery Clerk of Madison County database of subdivision plat images.</p>	
--	--	--

BRB — THE PUBLIC RECORD AUTHORITY

Key Public Record Resources for Legal and Investigative Professionals

From the Nation's Leading Publisher of Public Record Information



Key Public Record Resources for Legal and Investigative Professionals

[Subscriber Login](#)
[PRRN Member Login](#)
[Products/Services ▾](#)
[Find a Vendor ▾](#)
[About BRB ▾](#)

BRB Publications, LLC. is the nation's premier publisher of references and websites used for locating public records. BRB's books and electronic products point the way to over 28,000 government agencies, and 3,500 public record vendors who maintain, search, or retrieve public records.

Free Public Record Services

BRB Publications, LLC. is the most comprehensive and accurate resource of government and vendor sources and websites used for locating public records in the U.S.

Searching by City,
County or State?
Try The New



The Direct Route

Find a Public Record Retriever (PRRN) Member

Free Public Record Searches

Other Links to Useful Resources

Free Articles About Public Record Searching

Enhanced Data For Professionals

BRB's books and electronic products provide invaluable details that go well beyond a Google search. Our in-depth descriptions of *where at, how much, and is it any good* all translate to enhanced productivity tools when in-depth due diligence is needed.

Visit the BRB Bookstore

BRB's Online Subscriptions

[State, County, and City Sites](#)

[State Occupational Licensing Boards](#)

[State Appellate & Supreme Court Opinions & Decisions](#)

[Federal Courts' Opinions and Decisions](#)

[Searchable Federal Sanctions Sites and Significant Agencies](#)

[U.S. Territories](#)

[Military Sites](#)

[Unclaimed Funds](#)

[Foreign Sites - Canada](#)

[Foreign Embassy Sites in U.S.](#)

At The County Level		Free Record Search - State Agencies
Adams	Leflore	Mississippi - Boat Registration
Alcorn	Lincoln	Mississippi - Business Entities
Amite	Lowndes	Mississippi - Campaign Finance Reports
Attala	Madison	Mississippi - Incarceration Records - Inmates or Parolees
Benton	Marion	Mississippi - Lobbyists and Lobbyist Client Search
Bolivar	Marshall	Mississippi - Most Wanted
Calhoun	Monroe	Mississippi - PAC List
Carroll	Montgomery	Mississippi - Parolee Search
Chickasaw	Neshoba	Mississippi - Securities
Choctaw	Newton	Mississippi - Sex Offender Registry
Claiborne	Noxubee	Mississippi - State Archives
Clarke	Oktibbeha	Mississippi - Supreme Court Dockets
Clay	Panoia	Mississippi - UCC Filings
Coahoma	Pearl River	Mississippi - Unclaimed Property
Copiah	Perry	Mississippi - Workers' Compensation - Employer Proof of Coverage
Covington	Pike	
DeSoto	Pontotoc	State Agency Home Page Links
Forrest	Prentiss	Attorney General
Franklin	Quitman	Birth Records
George	Rankin	Business Entity Records
Greene	Scott	Crash Reports
Grenada	Sharkey	Criminal Records
Hancock	Simpson	Death Records
Harrison	Smith	Divorce Records
Hinds	Stone	Driving Records
Holmes	Sunflower	Election Related Records
Humphreys	Tallahatchie	GED and HiSET Records
Issaquena	Tate	Governor
Itawamba	Tippah	Incarceration Records
Jackson	Tishomingo	Legislation and Statutes
Jasper	Tunica	Marriage Certificates
Jefferson	Union	Sales Tax Registration
Jefferson Davis	Walthall	Sexual Offender Registry
Jones	Warren	State Archives
Kemper	Washington	State Judicial System
Lafayette	Wayne	UCC Records
Lamar	Webster	Vehicle Records
Lauderdale	Wilkinson	Watercraft Records
Lawrence	Winston	Workers Compensation
Leake	Yalobusha	
Lee	Yazoo	

ONLINE SEARCHES

Property Records

- [Land Records and Deeds](#)
- [Foreclosures and Tax Lien Sales](#)
- [Assessor and Property Tax Records](#)
- [GIS and Mapping](#)

Vital Records

- [Genealogy Records](#)
- [Birth Records](#)
- [Death Records](#)
- [Marriage Records](#)
- [Divorce Records](#)

Community Health & Safety

- [Sustainability and Environmental Health](#)
- [Traffic Cameras and Reports](#)
- [Crimes and Crime Data](#)

Jobs & Employment

- [Employee Directory](#)
- [Government Jobs and Employment Listings](#)

Criminal and Court Records

- [Warrants](#)
- [Jail and Inmate Records](#)
- [Sex Offender Registration](#)
- [Court Records](#)

Licensing and Permits

- [Business Licenses](#)
- [Contractor Licenses](#)
- [Professional Licenses](#)
- [Bar Associations](#)
- [Permits and Inspections](#)

Codes, Regulations, & Other

- [Laws and Codes](#)
- [Voter and Elections Information](#)
- [UCC Filings](#)
- [Unclaimed Property](#)



COURT AND CRIMINAL RECORDS

COURTS

- Mississippi Electronic Courts
- PACER | RECAP | Court Listener
- Mississippi Administrative Office of Courts
- Tribal Court Clearinghouse
- United States Tax Court
- Fast Case
- Westlaw | Lexis

COURT LISTENER
From Free Law Project, a 501(c)(3) non-profit.

About FAQ Tour Sign in / Register

Opinions ▾ RECAP Archive Oral Arguments Judges Visualizations ▾ [♥ Donate](#)

Advanced RECAP Search

Search our database of millions of PACER documents and dockets.

Install the free [RECAP extensions for Firefox and Chrome](#) to contribute to this archive.

[Learn More](#)

☆ United States v. Adams (3:18-cr-00088)

District Court, S.D. Mississippi

[View on PACER](#) [Search this Docket](#) [Get Alerts](#)

Last Updated: Aug. 27, 2019, 12:26 p.m. CDT
 Assigned To: Daniel Porter Jordan III
 Date Filed: May 1, 2018
 Date Terminated: Nov. 8, 2018
 Date of Last Known Filing: Feb. 21, 2019

[DOCKET ENTRIES](#) [PARTIES AND ATTORNEYS](#)

Filed: to Documents: to [Ascending](#) [Descending](#)

Document Number	Date Filed	Description	
	May 1, 2018	Initial Appearance	↔
	May 1, 2018	Add and Terminate Attorneys	↔
1	May 1, 2018	INFORMATION - FELONY as to Arthur Lamar Adams (1) count(s) 1-2, 3. (Attachments: # 1 Criminal Cover Sheet) (MGB) (Entered: 05/01/2018)	↔
		Main Document Information - Felony	Download PDF
		Attachment 1 Criminal Cover Sheet	Download PDF
	May 1, 2018	Minute Entry for proceedings held before Magistrate Judge Linda R. Anderson: Initial Appearance as to Arthur Lamar Adams held on 5/1/2018. Appearances: David Fulcher, AUSA; John Collette and Sherwood Collette, counsel for defendant; Arthur Lamar Adams, defendant; and Robert B. Wilder, Jr., USPO. Defendant informed of his rights, including the right to counsel if he could not afford an attorney and the right to indictment by a grand jury. Defendant waived those rights. Court informed the defendant of the charges against him and the penalties for said charges. Defendant waived the formal reading of the Bill of information. Court will continue the case for plea and sentencing.	↔

2	May 1, 2018	Praecepte for Summons by USA as to Arthur Lamar Adams. (MGB) (Entered: 05/01/2018)	↔
		Main Document Praecepte for Summons	Download PDF
4	May 1, 2018	WAIVER OF INDICTMENT by Arthur Lamar Adams (WG) (Entered: 05/01/2018)	↔
		Main Document Waiver of Indictment	Buy on PACER
5	May 1, 2018	ORDER Setting Conditions of Release as to Arthur Lamar Adams (1)\$ 25,000 unsecured. Signed by Magistrate Judge Linda R. Anderson on 5/1/2018. (WG) (Entered: 05/01/2018)	↔
		Main Document Order Setting Conditions of Release	Buy on PACER
6	May 1, 2018	Unsecured Bond Entered as to Arthur Lamar Adams in the amount of \$ 25,000.00. (WG) (Entered: 05/01/2018)	↔
		Main Document Bond	Buy on PACER
7	May 1, 2018	ORDER CONTINUING CAUSE FOR PLEA AND SENTENCE as to Arthur Lamar Adams. Signed by Magistrate Judge Linda R. Anderson on 5/1/2018. (WG) (Entered: 05/01/2018)	↔
		Main Document Order	Buy on PACER
8	May 1, 2018	Digital Audio File as to Arthur Lamar Adams regarding Initial Appearance, held on 5/1/2018 before Magistrate Judge Linda Anderson AUDIO FILE size(9.2 MB) (WG) (Entered: 05/01/2018)	↔
		Main Document Digital Audio File	Buy on PACER

MISSISSIPPI ADMINISTRATIVE OFFICE OF COURTS

- Statewide search of civil, probate, or felony records by a fax request.
- Request should include the name, DOB, and full or partial SSN.
- Only criminal felony cases with dispositions are reported.
- The results report the county and docket number of the case.

▲ Kehlye Gaddis

▲ Phone: 601-576-4634

▲ Fax: 601-576-4639

▲ kgaddis@courts.ms.gov

TRIBAL COURT CLEARINGHOUSE

- Native American Tribes are sovereign entities and are not governed by state or federal courts.
- The Tribal Court Clearinghouse is a comprehensive website resource for American Indian and Alaska Native Nations, tribal justice systems, victim service providers, and tribal service providers.
- The Tribal Law tab provides direct links to many resources including Tribal Courts, Tribal Court Decisions, and Law Enforcement resources.

CRIMINAL BACKGROUND CHECKLIST

- Vinelink
- Mississippi Department of Corrections - Inmate Search
- Mississippi Department of Corrections - Parolee Search
- Mississippi Administrative Office of Courts – (Statewide)
- Mississippi Electronic Courts (MEC) – (County of Residence)
- Mississippi Department of Public Safety Driver Record Report
- Mississippi Sex Offender Registry
- Mississippi Band of Choctaw Indians Sex Offender Registry

CRIMINAL BACKGROUND CHECKLIST

(Continued)

- County Jail – Arrest and Booking Records
- National Sex Offender Public Website
- FBI State Sex Offender Registry
- Federal Bureau of Prisons Inmate Finder
- Public Access to Court Electronic Records (PACER)
- Case Law Database – Westlaw | Lexis | Fast Case
- Tribal Court Clearinghouse
- Private Databases – Accurant | TLOxp | Westlaw People Map

CRIMINAL BACKGROUND CHECKLIST

(Continued)

- News and Media Databases

- Social Media – Arrests.org | Mugshots.com | RapSheets.org

- Corrections.com

- Inmateplus.com

- Theinmatelocator.com

- On Site County Jail – Arrest and Booking Records

- Onsite County Court Records Search

- Mississippi Bureau of Investigations – Criminal Investigation Center

VINE LINK

Offender Name:	SMITH, BRADEN TREAY	Custody Status:	In Custody	Notify Me of Status Changes
Age:	34	Location:	Stone County	
Race:	White	Contact Facility:	Mississippi Department of Corrections	

[More Info](#)

Offender Name:	SMITH, BRADEN	Custody Status:	In Custody	Notify Me of Status Changes
Age:	34	Location:	Stone County Regional Jail	
Race:	White	Contact Facility:	Stone County Regional Jail	

[More Info](#)

Offender Name:	SMITH, BRADY	Custody Status:	Unsupervised Custody	Notify Me of Status Changes
Age:	46	Reason:	Probation or Parole	
Race:	White	Contact Facility:	Mississippi Department of Corrections	

[More Info](#)

MISSISSIPPI ARREST AND INMATE RECORDS

Madison County Detention Center

Madison County Detention Center
2935 Highway 51 South
Canton, MS 39046
Sheriff Randall Tucker

Intake Report

Person

Name: JAMARIUS DESHWAN PALMER

DOB: 11/21/1990 **AGE:** 028

Description

HGT: 510 **WGT:** 170
RACE: BLACK **SEX:** M
HAIR: BLACK **EYE:** BROWN
FHAIR: GOATEE **COMPL:** MEDIUM B



Intake / Booking

OFF DATE: 00/00/0000 - **Case#:** OTHER
INTAKE DATE: 07/09/2019 **TIME:** 01:10
INTAKE #: BK0000077946 - 001
ARRESTING AGENCY: RIDGELAND PD

Bond Information

WRITTEN BOND: \$.00
CASH BOND: \$.00

DESCRIPTION	WHICH COURT	BOND AMT
Human Trafficking	CIRCUIT	250000.00

[Back](#)

SEX OFFENDER REGISTRY

- National Sex Offender Registry
- FBI State Sex Offender Directory
- Mississippi Sex Offender Registry
- Mississippi Band of Choctaw Indians Sex Offender Registry

POLICE REPORTS IN NEWSPAPERS

Using News Databases to Find Police Reports

Arrests

- [REDACTED] (suspect), [REDACTED] Drive, [REDACTED], charged with driving under the influence, speeding and reckless driving.
- [REDACTED] (suspect), 9400 block of [REDACTED] Lane, [REDACTED], charged with possession of a controlled substance (6.8 grams of marijuana), possession of drug paraphernalia and speeding.

SEARCHSYSTEMS.NET PREMIUM DATABASE

Limited Mississippi Jurisdictions Covered

SearchSystems.net

Home Blog Videos Guides Latest Resources Contact

FREE PUBLIC RECORDS



Welcome to Search Systems, your guide to Free Public Records. We're a family-owned business established in 1990 that has worked since 1996 to take the guesswork out of finding public record information online. We've personally located, analyzed, described, and organized links to over 70,000 databases by type and location to help you find property, criminal, court, birth, death, marriage, divorce records, licenses, deeds, mortgages, corporate records, business registration, and many other public record resources quickly, easily, and for free.

Search Free Public Records

In a State By Type of Record In a County By City By Zipcode Nationwide In Other Countries

Select a State

View statewide, county, and city records, state licenses, or search by category (court records, property, corporations, etc.) for that state.

Free public record databases are priced right and give you current and accurate information right from the source. But you can only search one city, county, or state at a time. Our Premium databases help you save time and find more records as you can expand to statewide or nationwide searches for a small fee.

Premium Databases

Criminal Records

Do a comprehensive background search of over 500 million court, inmate, corrections, offender, and fugitive records.

Bankruptcies-Judgments-Liens

Search over 100 million records nationwide by Individual Name, Business Name, or SSN/Tax ID.

National Security Search

Search over 75 terrorist, designated national, denied person, money laundering, and broker discipline databases at once.

Tenant Screening/Evictions

Manage your risks and save time looking for court eviction records. Use this database to find them for you.

Department of Corrections

Description: Sentencing records of felony convictions from all counties' Circuit Courts of persons sentenced to probation or time in a state institution; includes records on parolees. Records on over 204,000 persons. Search results may show Name, DOB, Race, Registered, Charge, County of Offense, Disposition, Disposition Date, Sentence, Probation or Parole Status and Related Dates.

Age of records: 1976

Update Frequency: Monthly

Mississippi Parole Board

Description: Records of over 10,000 parolees currently under the supervision of the Mississippi Department of Corrections. Results may include Name, DOB, Address, AKA's, and Offense.

Age of records: Unavailable

Update Frequency: Monthly

Registered Offender Registry

Description: Data contains over 6,000 registered registered offenders. Search results can include Name, DOB, Offense, Address, and Crime Location.

Age of records: 1990

Update Frequency: Bi-Weekly

Desoto County

Description: Data contains over 22,000 misdemeanor records from the Desoto County Circuit Clerk. Search results may include Case Number, Name, File Number, File Date, Case Type, Offense, and Court. Date of Birth is not available from this source.

Age of records: 2003

Update Frequency: Monthly

Harrison County

Description: Data contains felony and misdemeanor records of over 27,000 offenders. Search results may include Name, Case Number, Case Type, Case Status, File Date, Offense, Offense Date, Disposition and Disposition Date. Date of Birth is not available from this source.

Age of records: 2000

Update Frequency: Monthly

Hinds County (metro Jackson)

Description: Hinds County data contains felony and misdemeanor disposition records on over 42,000 individuals. Data can contain Name, DOB, Offense, Case Number, Sentence, Disposition, and Arrest Date.

Age of records: 1992

Update Frequency: Monthly

Hinds County - Justice Court

Description: Data contains misdemeanor records for over 160,000 offenders. Search results may include Name, DOB, Address, Race, Registered, Arresting Agency, Case Number, Offense, Offense Date, Statute Code, Disposition, and Disposition Date.

Age of records: 1989

Update Frequency: Monthly

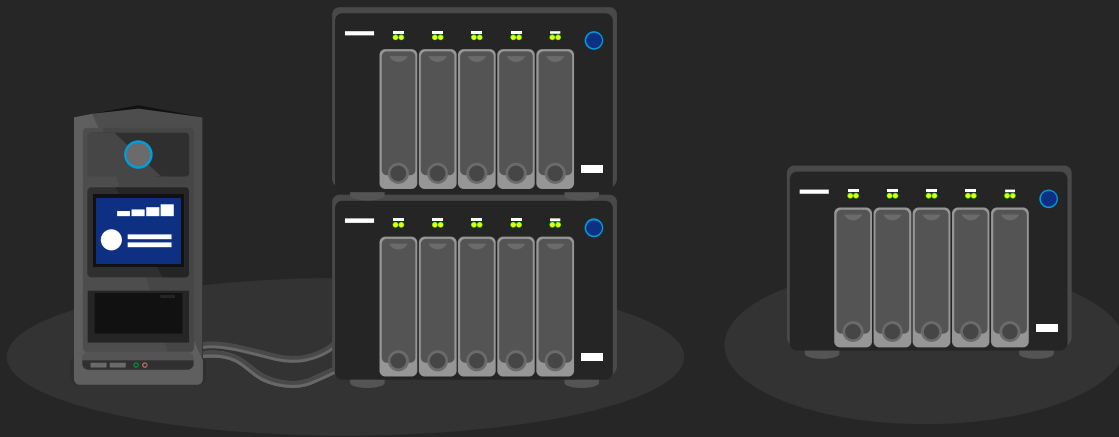
Mississippi Band of Choctaw Indians Registered Offender Registry

MISSISSIPPI BUREAU OF INVESTIGATION

Criminal Investigation Center

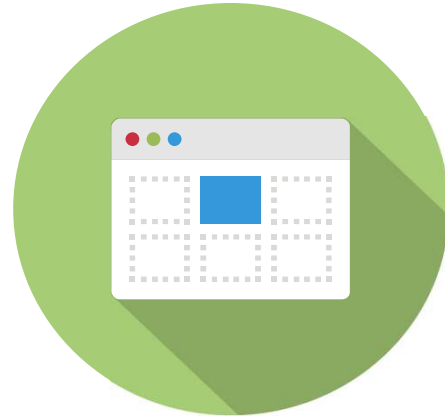
- Requires express written consent on the state's Release Information Request Form.
- There is a charge for the search.
- The search can be name based or fingerprint based.
- Both charges and convictions are shown on the results.
- Dispositions are available for less than half of records.

PRIVATE DATABASES — PUBLIC RECORDS



PRIVATE DATABASES – PUBLIC RECORD SEARCHES

- Lexis Nexis Accurint
- TransUnion TLOxp
- Westlaw People Map
- Thomson Reuters CLEAR
- Delvepoint



LEXIS NEXIS ACCURINT

People

- › Person Search
- › Advanced Person
- › People at Work
- › Police Records
- › InstantID
- › Death Records
- › Email Search
- › Florida Accidents
- › Voter Registrations
- › Sexual Offenders
- › USA PATRIOT Act
- › Social Media Locator
- › Carrier ID
- › InstantID International

Assets

- › Real-Time Vehicle Registrations
- › Motor Vehicles
- › National Plate to VIN **NEW!**
- › **BARFAX**
- › Property Assessments
- › Property Deeds
- › Watercraft
- › FAA Aircraft

Record Retrieval

- › Medical, Employment and Business Records

Businesses

- › Business Search
- › Corporation Filings
- › Dun & Bradstreet
- › National UCC Filings
- › Business InstantID
- › Delaware Corporations
- › Business Credit
- › D & B Global Market Identifiers
- › OSHA Investigative Reports
- › Internet Domains
- › Fictitious Business Names

Phones

- › Phones Plus
- › Basic Lookup
- › Reverse Lookup
- › Canadian Phones

Analytical Tools

- › Rate Evasion Evaluation
- › Batching

News

- › People in the News
- › Negative News
- › Businesses in the News
- › Deaths & Obituaries in the News
- › Archived News

Courts

- › State & Local Criminal Records
- › State Civil Courts
- › Bankruptcy
- › Liens & Judgments
- › Federal Civil Court Records
- › Marriages/Divorces
- › Official Records
- › Federal Criminal Court Records
- › Foreclosures
- › Court Search Wizard

Licenses

- › Driver Licenses
- › Professional Licenses
- › MVR Reports (Driving Records)
- › Hunting/Fishing Licenses
- › FAA Pilots
- › Federal Firearms & Explosives

Health Care

- › American Board of Medical Specialties
- › Provider Search
- › Provider Sanction Search
- › NPI Data Search
- › NCPDP Search
- › Provider Report Card

Batching

- › People
- › Waterfall Phones and Address

[My Accurint](#) [People](#) [Business](#) [Assets](#) [Licenses](#) [Phones](#) [Courts](#) [Health Care](#) [News](#)

Analytical Tools

[Person](#) [Advanced Person](#) [People At Work](#) [Police Records](#) [InstantID](#) [More Searches](#)

Last Name: First Name: Middle Name: SSN: LexIDSM:

Include similar sounding names Strict Search Include Full Address History

Street Address: City: State: Zip:

County: Radius: Phone: DOB: Age Range:

Include LexisNexis® Fraud Defense Network (FDN)

[Fraud Defense Network option currently disabled](#)

[SEARCH](#) [CLEAR FORM](#)

[Coverage](#) | [Help?](#)

Important: The Public Records and commercially available data sources used in this system have errors. Data is sometimes entered poorly, processed incorrectly and is generally not free from defect. [Read More](#)

Additional Subject Information

Other Last Name: Other City: Other State: Other State:

Relative First Name: Other Relative First Name:

Reference Code: DOL:

All	Full Name	SSN	Address	Phone	Next Steps
1.	ROBERT BRADFORD JONES ROBERT B JONES ROBERT O JONES ROBERT JONES BRAD JONES DOB: 12/11/1973 Age: 45 DOB: 12/11/1974 Age: 45 DOB: 12/7/1974 Age: 44 Gender - Male Setup Alert	xxx-xx- LexID: 1282395742	122 DEER CREEK CV MADISON MS 39119-7681 Mar 2005 - Sep 2019 ✓ Probable current address	601-898-4034 - CDT Mar 05 - Sep 19 Current DA JONES ROBERT (Current Listing Name)	+ Relatives + Neighbors + Associates + Relatives, Neighbors & Associates Comprehensive Report Other Reports Finder Report Address Report 12 Viewer Court Search Social Media Locator Points of Contact Report Learn how Accurint Reports can assist you: See Examples
We Also Found: <input type="checkbox"/> Phones Plus <input type="checkbox"/> Motor Vehicles <input type="checkbox"/> Email Address Get Selected Results					
			101 FIRST COLONY BLVD MADISON MS 39110 Sep 2017 - Aug 2019		
			1885 MAIN ST STE C MADISON MS 39119-6337 *Addressing or letter service Jul 2016 - Feb 2016		
			1885 MAIN ST STE C285 MADISON MS 39119-6337 Oct 2008 - Sep 2017		
			205 BALL AVE TYLERTOWN MS 39667-2103 Mar 2006 - Mar 2011	601-876-5640 - CDT Possible non-DA JONES ROBERT B (Current Listing Name)	
			PO BOX 488 TYLERTOWN MS 39667-0448 Aug 1979 - Jan 2009		
			122 DEES DR MADISON MS 39110-5004 Apr 2005		
			5201 LAKELAND BLVD APT 10 FLOWOOD MS 39232-8912 Mar 2003 - Apr 2005		
			5201 LAKEWOOD BLVD APT 10 FLOWOOD MS 39232 Nov 2004		
			3803 BRADLEY CV OXFORD MS 38655-2635 1999 - 2004	662-234-2261 - CDT Mar 00 - Mar 04 Possible non-DA phone number may be disconnected	
			879 WILLIAM BLVD APT 13F RIDGELAND MS 39157-1562 Jun 2001 - Mar 2003		
			879 WILLIAM BLVD APT A RIDGELAND MS 39157-1510 Sep 2002		
			879 WILLIAM BLVD APT A 13F RIDGELAND MS 39157-1510 Sep 2002		
			118 W 3RD ST APT 6138 NEW YORK NY 10012-1003 *College or university Nov 2000 - Dec 2000		
			101 MICHAEL DR OXFORD MS 38655-4218		

LEXIS NEXIS ACCURINT

Comprehensive Report

- Bankruptcies
- Driver's License
- Liens and Judgments
- Address History
- UCC Filings
- Properties Owned
- Phones Plus
- Motor Vehicles Registered
- People at Work
- Watercraft

LEXIS NEXIS ACCURINT

Comprehensive Report (Continued)

- FAA Certifications
- Professional Licenses
- FAA Aircrafts
- Voter Registration
- Criminal Records
- Hunting/Fishing Permit
- Sexual Offenses
- Concealed Weapons Permit
- Florida Accidents
- Associates | Relatives | Neighbors

Active Address(es):



122 DEER CREEK CV, MADISON, MS 39110-7681, MADISON COUNTY (Mar 2005 - Sep 2019)

Utility Locator - Connect Date: 10/31/2008

Name Associated with Address:

ROBERT JONES

Current Residents at Address:

ROBERT BRADFORD JONES

TERRENCE DEMOND MCCLINTY

SYLENA FAY MCCLINTY

601-898-4634 - CDT JONES ROBERT

Property Ownership Information for this Address

Property:

Parcel Number - 081E-15 -100

Book - 2513

Page - 292

Owner Name: ROBERT B JONES LexID: 1282395742

Owner Name 2: MARCIE R JONES LexID: 2148436446

Property Address: - 122 DEER CREEK CV, MADISON, MS 39110-7681, MADISON COUNTY

Owner Address: 122 DEER CREEK CV, MADISON, MS 39110-7681, MADISON COUNTY

Land Usage - SINGLE FAMILY RESIDENTIAL

Subdivision Name - DEVLIN SPRINGS I

Total Market Value - \$ 7,210

Assessed Value - \$ 721

Land Value - \$ 000

Improvement Value - \$ 7,210

Year Built - 2004

Legal Description - LOT 26 DEVLIN SPRINGS 1 D@141

Data Source - B

Motor Vehicles Registered To Subject:

Vehicle:

Description: White 2015 Toyota 4Runner - 4 Dr Wagon Sport Utility

VIN: JTEZU5JR8F5100621

State Of Origin: MISSISSIPPI

Engine: 6 Cylinder 244 Cubic Inch -- Gas Powered

Anti Lock Brakes: 4 wheel standard

Air Conditioning: Standard

Daytime Running Lights: Standard

Power Steering: Standard

Power Brakes: Standard

Power Windows: Standard

Security System: Passive Engine Immobilizer, Keyless Entry & Alarm

Roof: None / not available

Price: 010

Radio: AM/FM CD/MP3

Front Wheel Drive: No

Four Wheel Drive: No

Tilt Wheel: Standard

Data Source: Governmental

Registrant(s)

Record Type: CURRENT

Name: ROBERT B JONES

LexID: 1282395742

Potential SSN : [REDACTED]

Address: 101 FIRST COLONY BLVD, MADISON, MS 39110, MADISON COUNTY

DOB: 12/7/1973

Sex: Male

Age: 45

Tag Number: 01239

Plate Type Code: EA

Plate Type Description: Educational Affiliation

License State: MS

Earliest Registration Date: 7/19/2018

Latest Registration Date: 5/3/2019

Expiration Date: 5/31/2020

TRANSUNION - TLOXP

<p>People</p> <ul style="list-style-type: none"> Advanced Expert Plus Expanded Expert Deceased Phone Report Address Report Licenses <ul style="list-style-type: none"> • Drivers • Professional • Pilot • Voter Registrations Phones <ul style="list-style-type: none"> • 411+ • Super Reverse Lookup Social Media <ul style="list-style-type: none"> • Basic Search • Comprehensive Report Emails Utilities Global Watch Lists 	<p>Business Plus</p> <ul style="list-style-type: none"> US Businesses World Businesses Business Phones US Corporations UCC Filings 	<p>Courts</p> <ul style="list-style-type: none"> Foreclosures Liens <ul style="list-style-type: none"> • Personal • Business Judgments <ul style="list-style-type: none"> • Personal • Business Bankruptcies <ul style="list-style-type: none"> • Personal • Business Evictions 	<p>California</p> <ul style="list-style-type: none"> Ultimate Weapon Births Civil Filings Corporations Criminal Records Deceased Equalization and ABC Licenses Fictitious Business Names Marriages Professional Licenses Property UCC Filings
	<p>Assets</p> <ul style="list-style-type: none"> Vehicles - Advanced Vehicles - Wildcard CARFAX® Report Properties Property Deeds Property Assessments Vessels 	<p>Criminal Records</p> <ul style="list-style-type: none"> Unified Criminals 	

<p>WARNING - Due to the quality of Criminal data entry - Data displayed may not pertain to your Subject. Separate Criminal Search is highly suggested as well as independent verification of anything displayed on this system.</p>	
<p>Name: ██████████ AKAs: ██████████ DOB: Unavailable Address: FREDERICKSBURG, VA 22405 (STAFFORD COUNTY) Gender: F Ethnicity: WHITE Is Sex Offender: No Source Name: ADMINISTRATIVE OF THE COURTS CIRCUIT COURTS Source State: VA</p>	<p>Match Indicators</p> <ul style="list-style-type: none"> First Name: ○ Exact Match Middle Name: ○ Exact Match Last Name: ○ Exact Match Date Of Birth: X Not Available On Record Age: X Not Available On Record Address: ○ Zip Matched Height: X Not Available On Record Ethnicity: X Not Available On Record
<p>Crime Details - 12/13/2011 - VA</p>	
<p>OffenseDescription1: CREDIT CARD FORGERY Case Number: GC11011695-00 Crime Type: FELONY OffenseCode: 18.2-193 DegreeOfOffense: FELONY</p>	<p>Charges Filed Date: 12/14/2011 Disposition: CERTIFIED TO GRAND JURY - FOR FINAL CASE DISPOSITION, SEE CIRCUIT COURT CASE INFORMATION Offense Date: 12/13/2011 Arrest Date: 12/13/2011</p>

Evictions (2 Found)

Filing Date: **05/11/2011**

Name: [REDACTED] [\[View Person Record \]](#)

Address: [REDACTED] CT, FREDERICKSBURG, VA 22408 (SPOTSYLVANIA COUNTY)

Case Number: **177GV1100146900**

Filing Type: **Civil Judgment**

Filing State: **VA**

Action Type: **04**

Unlawful Detainer: **N**

Liability Amount: **\$1,408**

Filing Date: **05/08/2009**

Name: [REDACTED] [\[View Person Record \]](#)

Address: [REDACTED] CT, FREDERICKSBURG, VA 22408 (SPOTSYLVANIA COUNTY)

Case Number: **630GV0900263500**

Filing Type: **Civil Judgment**

Filing State: **VA**

Action Type: **04**

Unlawful Detainer: **N**

Liability Amount: **\$2,057**

WESTLAW PEOPLE MAP

Excerpt from Comprehensive Report

ROBERT B JONES

101 FIRST COLONY BLVD
MADISON, MS 39110-6073 | MADISON County

Phone Number(s):

601-955-[REDACTED]

601-898-4634

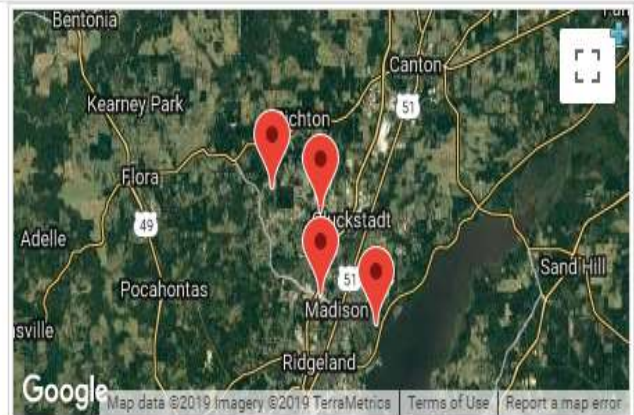
601-876-[REDACTED]

SSN:

425-33-XXXX - issued in MS in 1978-1979

DOB:

12/XX/1973 (Age: 45)



101 FIRST COLONY BLVD, MADISON, MS 39110-6073

Real Property Transactions (3) ▼

Property Address	Sale Price	Mortgage Amount	Recording Date	Confidence Score	View Full Text
122 DEER CREEK CV MADISON, MS 39110-7681	\$█2,059.00	\$█0,356.00	10/17/2016	82%	Full-Text <input type="button" value="X"/>
122 DEER CREEK CV MADISON, MS 39110-7681		\$126,500.00	03/01/2010	62%	Full-Text <input type="button" value="X"/>
122 DEER CREEK CV MADISON, MS 39110-7681			08/16/2005	82%	Full-Text <input type="button" value="X"/>

Criminal & Infraction Records

Offense Charged	Date of Offense or Charges Filed	Source State	Confidence Score	View Full Text
CONSPIRACY TO DEFRAUD THE UNITED STATES (1)	02/24/2011	MS	75%	View Additional Offenses

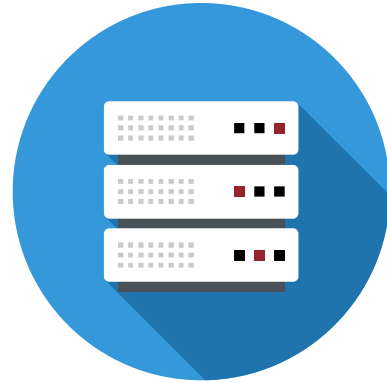
Healthcare Sanctions

Entity Type	Address	Confidence Score	View Full Text
INDIVIDUAL	BATESVILLE, MS 38606, UNITED STATES	96%	Full-Text
INDIVIDUAL	BATESVILLE, MS 38606, UNITED STATES	96%	Full-Text
INDIVIDUAL	P O BOX █ BATESVILLE, MS , UNITED STATES	99%	Full-Text

PRIVATE DATABASES — PUBLIC RECORD SEARCHES

Their Value and Limitations

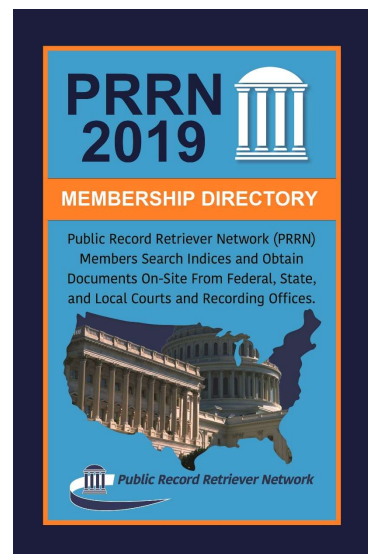
- Great Research Tool and Starting Point
- Great Supplemental Research Tool
- False Sense of Security
- False Negatives and False Positives
- “National” v. “Multi-Jurisdictional”



THE PUBLIC RECORD RETRIEVER NETWORK (PRRN)

Accessing Off-Line Public Records

- Search Court Dockets in Person
- View and Copy Pages From Case Files
- Probate Documents
- Liens and Judgments
- Real Estate Records



REAL ESTATE



DELTA COMPUTER SYSTEMS

Mississippi Property Tax Records

MISSISSIPPI COUNTIES

Adams	Greene	Leake	Pike
Alcorn	Grenada	Lee	Perry
Benton	Hancock	Lincoln	Rankin
Chickasaw	Harrison	Lowndes	Scott
Claiborne	Itawamba	Marion	Simpson
Clarke	Jackson	Marshall	Smith
Copiah	Jasper	Monroe	Stone
Covington	Jones	Neshoba	Tippah
Desoto	Lafayette	Newton	Union
Forrest	Lamar	Noxubee	Walthall
George	Lauderdale	Oktibbeha	Warren
		Pearl River	Washington
			Wayne

MISSISSIPPI CITIES

Natchez	Oxford
-------------------------	------------------------



Off Market

1 / 30



3 beds 2 baths 1,549 sq ft 0.29 acres lot

Commute Time 122 Deer Creek Cv, Madison, MS 39110

Be Ready to Buy. How Much Can You Borrow?

Est. \$ [REDACTED],000

Track Your Home Value

Property History for 122 Deer Creek Cv

This property was not sold in the last 15 years.

Today Estimated at \$ [REDACTED],000

Jun 21, 2016 Listed for \$ [REDACTED],500



Listing presented by Pete Prisock with Go Flat Fee Realty, Llc

Aug 3, 2004 Renovated: Other

History data displayed is obtained from public records and/or MLS feeds from the local jurisdiction. Contact your REALTOR® directly in order to obtain latest information.

Property Details for 122 Deer Creek Cv



Status Off Market



Price/Sq Ft \$115



Type Single Family Home

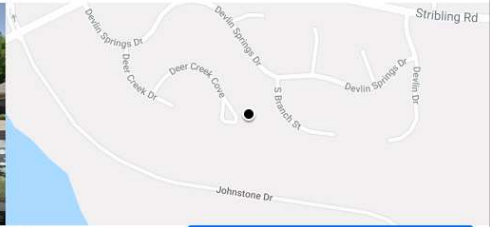
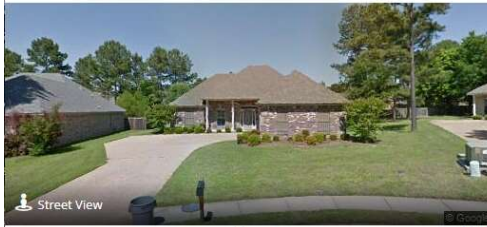


Built 2005

Public Records

- House size: 1,515 sq ft
- Lot size: 12796
- Year built: 2004
- Property type: Single family
- Stories: 1
- Cooling: Central
- Year renovated: 2004
- Date updated: 09/06/2019

ZILLOW.COM



122 Deer Creek Cv Madison, MS 39110

-- beds · 5 baths · 1,917 sqft

122 Deer Creek Cv, Madison, MS is a single family home that contains 1,917 sq ft and was built in 2004. It contains 5 bathrooms.

The Zestimate for this house is \$210,314, which has increased by \$3,115 in the last 30 days. The Rent Zestimate for this home is \$1,750/mo.

OFF MARKET
Zestimate®: \$210,314
Rent Zestimate®: \$1,750 /mo

EST. REFI PAYMENT
\$822/mo

[See current rates](#)

Home Shoppers are Waiting

40 shoppers are looking in your neighborhood and price range.

Your name

Phone

robertbradfordjones@gmail.com

I own this home and would like to ask an agent about selling 122 Deer Creek Cv, Madison, MS

[Contact Agent](#)

Or call 601-864-3268 for more info

Facts and Features

- Type: Single Family
- Year Built: 2004
- Heating: No Data
- Cooling: Central
- Parking: No Data
- Lot: No Data



U.S. DEPARTMENT OF THE INTERIOR
BUREAU OF LAND MANAGEMENT

PRINCE GEORGE CLASSALS
 Classifications - Names Report Date

City Commons
 That a David Unquibant

General Land Office Records

Search Documents Reference Center Support

The Official Federal Land Records Site

Welcome to the Bureau of Land Management (BLM), General Land Office (GLO) Records Automation web site. We provide live access to Federal land conveyance records for the Public Land States, including image access to more than five million Federal land title records issued between 1788 and the present. We also have images of survey plats and field notes, land status records, and control document index records. Due to organization of documents in the GLO collection, this site **does not** currently contain every Federal title record issued for the Public Land States.

Latest News and Updates
 7/25/2019 ****Did you know we updated our Story Map?****: "We are excited to share with you the new template for the GLO record of the week! Bookmark this s..."

Land Patents
Federal Land Patents offer researchers a source of information on the initial transfer of land titles from the Federal government to individuals. In addition to verifying title transfer, this information will allow the researcher to associate an individual (Patentee, Assignee, Warrantee, Widow, or Heir) with a specific location (Legal Land Description) and time (Issue Date). We have a variety of Land Patents on our site, including Cash Entry, Homestead and Military Warrant patents.



Survey Plats and Field Notes
Survey plats are part of the official record of a cadastral survey. Surveying is the art and science of measuring the land to locate the limits of an owner's interest thereon. A cadastral survey is a survey which creates, marks, defines, retraces or re-establishes the boundaries and subdivisions of Federal Lands of the United States. The survey plat is the graphic drawing of the boundaries involved with a particular survey project, and contains the official acreage to be used in the legal description.






Survey Plats and Field Notes
Survey plats are part of the official record of a cadastral survey. Surveying is the art and science of measuring the land to locate the limits of an owner's interest thereon. A cadastral survey is a survey which creates, marks, defines, retraces or re-establishes the boundaries and subdivisions of Federal Lands of the United States. The survey plat is the graphic drawing of the boundaries involved with a particular survey project, and contains the official acreage to be used in the legal description.


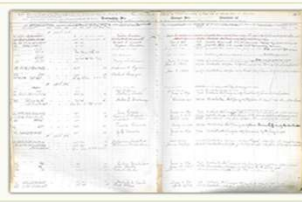
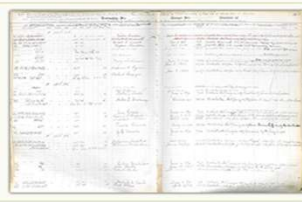

Field notes are the narrative record of the cadastral survey. They are written in tabular format and contain the detailed descriptions of entire survey process including the instrumentation and procedures utilized, calling all physical evidence evaluated in the survey process, and listing all of the individuals who participated in the work.


Land Status Records
Land Status Records are used by BLM Western State Offices to document the ongoing state of a township's Federal and private land regarding title, lease, rights, and usage. These documents include Master Title Plats, which are a composite of all Federal surveys for a township. Other Land Status Records include Use Plats, Historical Indices, and Supplemental Plats.



Control Document Index Records
The **Control Document Index** includes BLM documents that affect or have affected the control, limitation, or restriction of public land and resources. CDI documents include public laws, proclamations, and withdrawals. CDI documents have been kept on microfilm since the 1950's, but are now being scanned and linked to existing data records from BLM's LR2000 database.

<p>Land Status Records</p>	<p>Land Status Records are used by BLM Western State Offices to document the ongoing state of a township's Federal and private land regarding title, lease, rights, and usage. These documents include Master Title Plates, which are a composite of all Federal surveys for a township. Other Land Status Records include Use Plats, Historical Indices, and Supplemental Plats.</p>	
<p>Control Document Index Records</p>	<p>The Control Document Index includes BLM documents that affect or have affected the control, limitation, or restriction of public land and resources. CDI documents include public laws, proclamations, and withdrawals. CDI documents have been kept on microfilm since the 1950's, but are now being scanned and linked to existing data records from BLM's LR2000 database.</p>	
<p>Tract Books</p>	<p>Tract Books are used by BLM Eastern State Offices as the basic index for public land title research. Tract Books are simply listings of all the transactions involving surveyed public lands—by State or territory, meridian, township, range, section, and subdivisions. Today, there are 1,582 original General Land Office tract books at Eastern States, showing how, when, and to whom title to Public Domain lands passed from the United States—in the States of Alabama, Arkansas, Florida, Illinois, Indiana, Iowa, Louisiana, Michigan, Minnesota, Missouri, Mississippi, Ohio, and Wisconsin.</p>	
<p>Land Catalog</p>	<p>The Land Catalog application allows the public to search for Patents, Surveys, Land Status Records, CDI Documents, and LR2000 Case Recordation & Land Status reports associated with a specific township. This application displays the PLSS data layer for and a drop-down search menu for easy navigation from a State, Meridian, and Township perspective.</p>	

TOWNSHIP No. 22 N		RANGE No. 5 E		DISTRICT OF	
SECTION	OWNER	DATE OF ACQ.	BY WHOM ACQUIRED	DATE OF PATENT	BY WHOM PATENTED
6 24 7	187 00	50 79 61	John W. Skelton	24 Oct 1860	200 79
6 24 8	189 00	1 25 248	John W. Skelton	Young 2, 1867	202 79
6 24 9	79 61	7 00	Thomas A. Lawrence	Oct 26, 1867	206 22 33, 157 25 700 21, 1870
6 24 10	160 00		Jackson B. Bell	Dec 11, 1879	202 6 Cancelled - 4/24/1887
6 24 11	79 60	7 00	William H. Sherman	Sept 25, 1870	202 6 Cancelled through April 21, 1871
6 24 12	89 50	6 00	Joseph B. Bell	Oct 22, 1870	202 6 Cancelled April 22, 1871 July
6 24 13	79 60		Monroe J. Harbury	Feb. 12, 1893	0 114 35 Montgomery, Conn. 3/6/91 (Failed to submit proof)
6 24 14	39 91		M. H. W. 2259 to Abraham W. Alexander	July 14, 1863	by Shadrick Wright, secy.
6 24 15	160 00		James B. Bell	March 2, 1877	190 29 33 April 12, 1879 No. 11760 Co. 205 6
6 24 16	80 07	100 00	John A. Lawrence	Feb. 22, 1870	160 7 by John A. Lawrence, secy. Comm. 19 part Compt. No. 12474
6 24 17	160 00		Jackson B. Bell	Sept 22, 1870	56 20 Cancelled as better to Oct. 22, 1871
6 24 18	160 00		Anthony H. Sherman	Sept 2, 1870	204 72 changed to Cash No. 20156 March 7, 1871 Co. 202 7
6 24 19	160 00		James B. Bell	March 2, 1877	190 25 Cancelled Sept. 1, 1879 Comm. 205 6
6 24 20	160 00		Joseph B. Bell	July 20, 1866	181 22 Cancelled March 2, 1877 Co. 198 5
6 24 21	160 00		James B. Bell	Aug 12, 1870	202 7 Comm. Compt. 160 7 Cancelled as better to Oct. 22, 1871

 **HUD.GOV**

[SECRETARY OF HUD](#) [WHAT WE DO](#) [PRESS ROOM](#) [HUMANS OF HUD](#)

[HOUSING HOME](#) [ABOUT US](#) [SINGLE FAMILY](#) [HEALTHCARE PROGRAMS](#) [MULTIFAMILY](#) [HOUSING COUNSELING](#) [MORE](#)

Home / Program Offices / Housing / Single Family / REO / MM / HUD Redlegation of Authority: M & M Contractors

REDELEGATION OF AUTHORITY: M & M CONTRACTORS

HUD's Management and Marketing Contractors maintain and sell HUD-owned homes on behalf of the Department of Housing and Urban Development. The following is a list of authorized officials employed by HUD's Management and Marketing Contractors. The officials listed in the below files are authorized to execute routine documents necessary in the management and sale of HUD's Single Family Acquired properties, in their respective contract areas, in accordance with [Federal Register Notice FR-5076-D-06 dated October 12, 2006](#) and [Federal Register Notice FR-5557-D-08 dated June 5, 2012](#).

Denver	06-07-2019
Santa Ana	07-01-2019

Related Information

- [Single Family Housing](#)



GENERAL NEWS

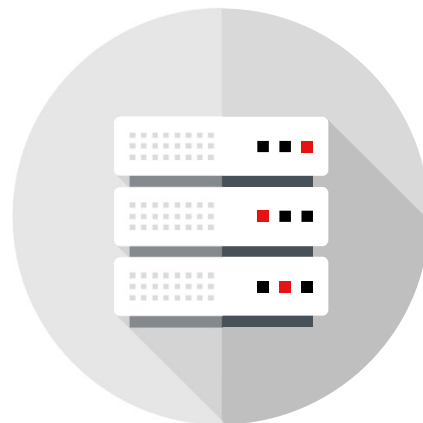
Newspaper Databases

- Newspapers.com
- Newspaper Archive
- Google News Archive
- Newslibrary.com
- Chronicling America
- ▲ Library of Congress News Archive



PREMIUM NEWS DATABASES

- EBSCOhost
- ProQuest
- Factiva
- Westlaw News
- Lexis Nexis News



Survivors include one brother, Woodrow O'Quin of Enon; three sisters, Bernice Boyd, Edna Greer and Perline Roberts, all of Enon; and nieces and nephews.

Marcus B. Dunaway

JUNCTION CITY, Ore. — A memorial service for Marcus Boyd Dunaway, 69, a resident of Junction City and a native of Jayess, was held Sunday in the Dunaway family home

Road, Eugene, Ore. 97400.

Andrew V. Jones

TYLERTOWN — Andrew V. Jones, owner and operator of Jones Furniture Store in Tylertown, died suddenly today in Yazoo City. Services were incomplete today with Hartman-Hughes Funeral Home of Tylertown in charge of arrangements.

Police report

McComb police are investigating two thefts that were reported Thursday.

Tanya K. Wicker, an employee of Don's Health and Family Fitness on Aston Avenue, reported that someone removed a lock from a wooden box that was kept in a

storage room. About \$300 in cash was stolen and eight checks were found beside the box.

Also, Jerry L. Soileau, 1248 Bendat, reported that someone broke into his home and stole a .357 Magnum pistol and a citizen's band radio scanner.

Mc
E
con
but
fall
A
off
the
V
tra
Su
Ro
sai
ha
by
out

S
Pr
Mi
Da
est
vic

NEWSPAPER DIRECTORIES

- Onlinenewspapers.com
- NewsLink.org



PUBLIC NOTICES – MISSISSIPPI PRESS ASSOCIATION

-  Government Contracts
-  Foreclosures
-  Advertisements for Bids
-  Financial Reports
-  Unclaimed Property

Search Public Notices in Mississippi Newspapers

County/Publication

County/Parish: All Counties/Parishes
(Hold Ctl Key to select multiple.)

Adams
Alcorn
Amite

Publication: All Newspapers

Search Notices

Search Notices: [View Search Tutorial](#)

With **all** these words:

With this **exact** phrase:

With **at least one** of these words:

Exclude notices with these **words**:

Number of Notices to Return:

250

Date Range: From

to

(mm/dd/yy)

Go!

OBITUARIES

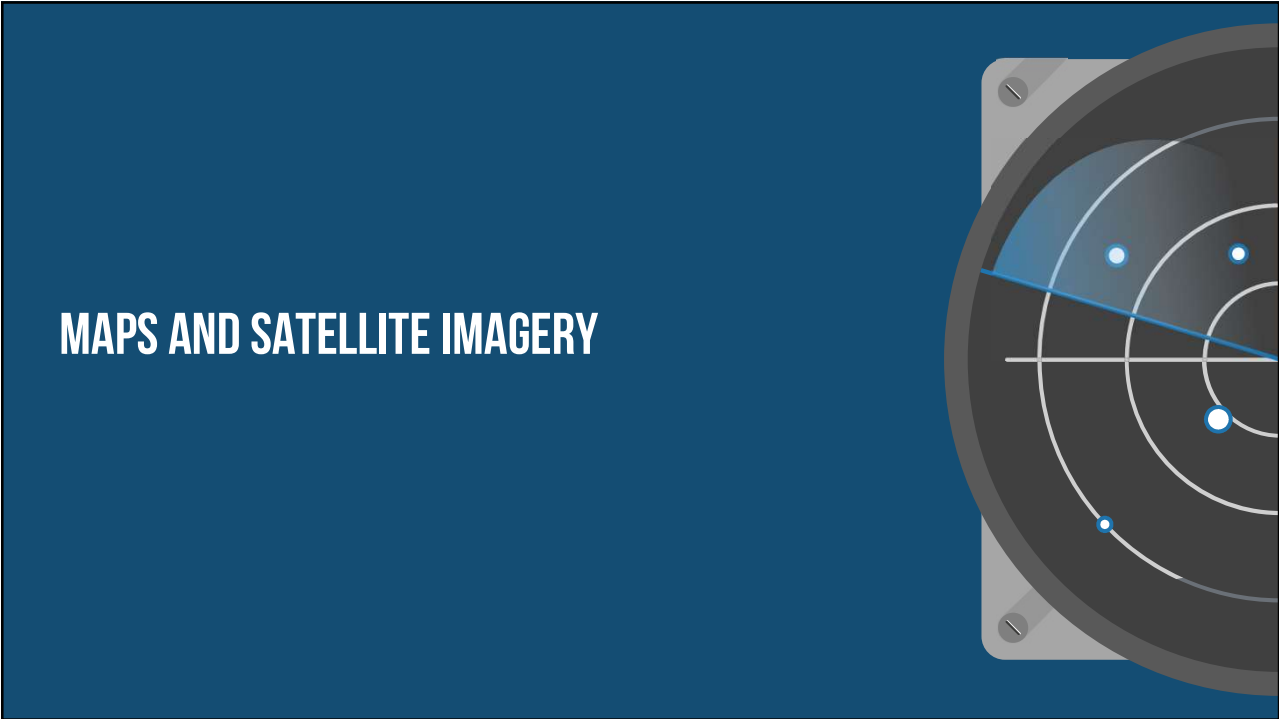
- ▲ Obitcentral.com
- ▲ Ancestry.com
- ▲ Obits Archive
- ▲ GenealogyBank.com
- ▲ Familysearch.org
- ▲ Deathindexes.com
- ▲ Findagrave.com
- ▲ Tributes.com
- ▲ Legacy.com
- ▲ USA.gov Genealogy and Family History
- ▲ Melissa Death Check



FAMILYSEARCH.ORG

Mrs Virginia C Jones United States, GenealogyBank Obituaries, 1980-2014			Tools
Deceased			
Name:	Mrs Virginia C Jones		
Event Type:	Obituary		
Event Date:	28 Mar 2009		
Event Place:	McComb, Mississippi, United States		
Residence Place:	Tylertown, Mississippi		
Gender:	Female		
Age:	64		
Occupation:	Homemaker		
Birth Date:	06 Oct 1944		
Birthplace:	Columbia		
Death Date:	28 Mar 2009		
Death Place:	Hattiesburg		
Burial Place:	Tylertown, Mississippi		
Newspaper:	Enterprise-Journal		
Spouse and Children			
Robert Jones	Husband	Male	
Brad Jones	Son	Male	

Spouse and Children		
Robert Jones	Husband	Male
Brad Jones	Son	Male
Parents and Siblings		
Shelby	Parent	Unknown
Doris Hawkins Cook	Mother	Female
Mike Cook	Brother	Male
Gerald Cook	Brother	Male
Charles Cook	Brother	Male
Randy Cook	Brother	Male
Mary Reimer	Sister	Female
Cathy Seal	Sister	Female
Louise Cook	Mother	Female
Extended Family		
Marcie Jones	DaughterInLaw	Female
Others on Record		
Rev Buddy Day	Nonrelative	Male
Timothy Jones	Unknown	Male
Drew Steinwinder	Nonrelative	Male
Jimmy Hobgood	Nonrelative	Male
Jeremy Holmes	Nonrelative	Male
Jim Johnson	Nonrelative	Male
Nathan Graves	Nonrelative	Male
Alex Nettles	Nonrelative	Male




EARTHPOINT.US

Earth Point

Tools for Google Earth [Sign In / Buy Subscription](#) [Contact](#)

- Home
- Sign In / Buy Subscription
- Worldwide Utilities
- Excel To Google Earth
- Coordinate Grids
- Polygon Area
- Convert Coordinates
- Batch Convert
- USA Utilities
- Township & Range
 - BLM Grid
 - Search By Description
 - Search By Lat Long
 - Alternate Grid
- Louisiana Twp & Rng
 - Louisiana Original PLSS
- California Twp & Rng
 - California Grid
 - Search By Description
 - Search By Lat Long
- Texas Land Survey
 - Abstract Grid
 - Search By Description
 - Search By Lat Long
- State Plane
- Topo Map

Earth Point Features [Prev](#) [Next](#) 1 of 12



Listings - Find your next home on Google Earth. Serving Ada and Canyon counties, Idaho, USA. Earth Point is the world's only web site that


- Maps real estate listings with roof-top accuracy and
- Draws the property lines

If you have not already, be sure to install [Google Earth](#).

Subscriptions

A subscription is recommended for the enhanced features of Earth Point. These are:

- [Township and Range](#) grid on Google Earth
- [Excel To Google Earth](#)
- [Coordinate Grids](#) on Google Earth
- [Calculate Polygon Area](#)
- [Batch Convert](#)

Enhanced features are marked with a 

However, if you are just looking, or if you don't use the enhanced features of Earth Point, then there is no need to purchase a subscription.

If there are several people in your office and you would like one billing for all of them, the solution is to put these accounts into "sub-accounts". If you would like assistance, I can easily convert existing accounts into sub-accounts.

Three subscription types are available.

Township and Range - Search By Description.

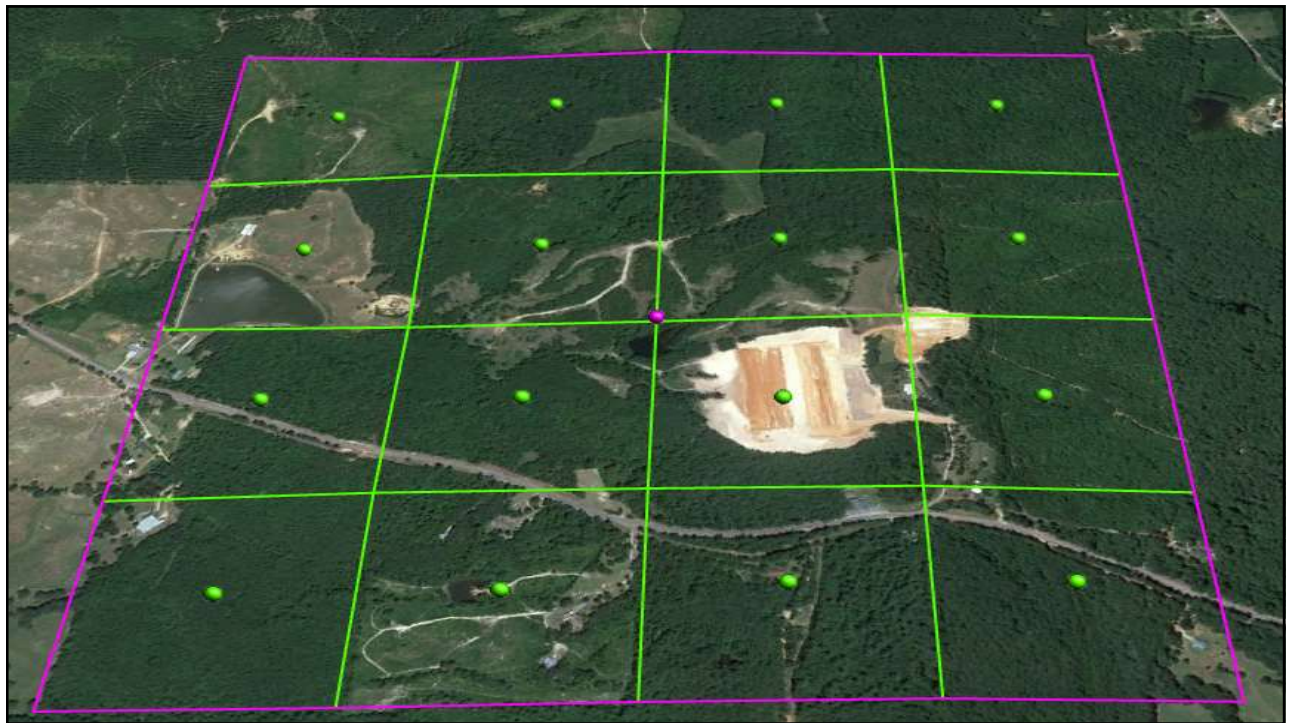
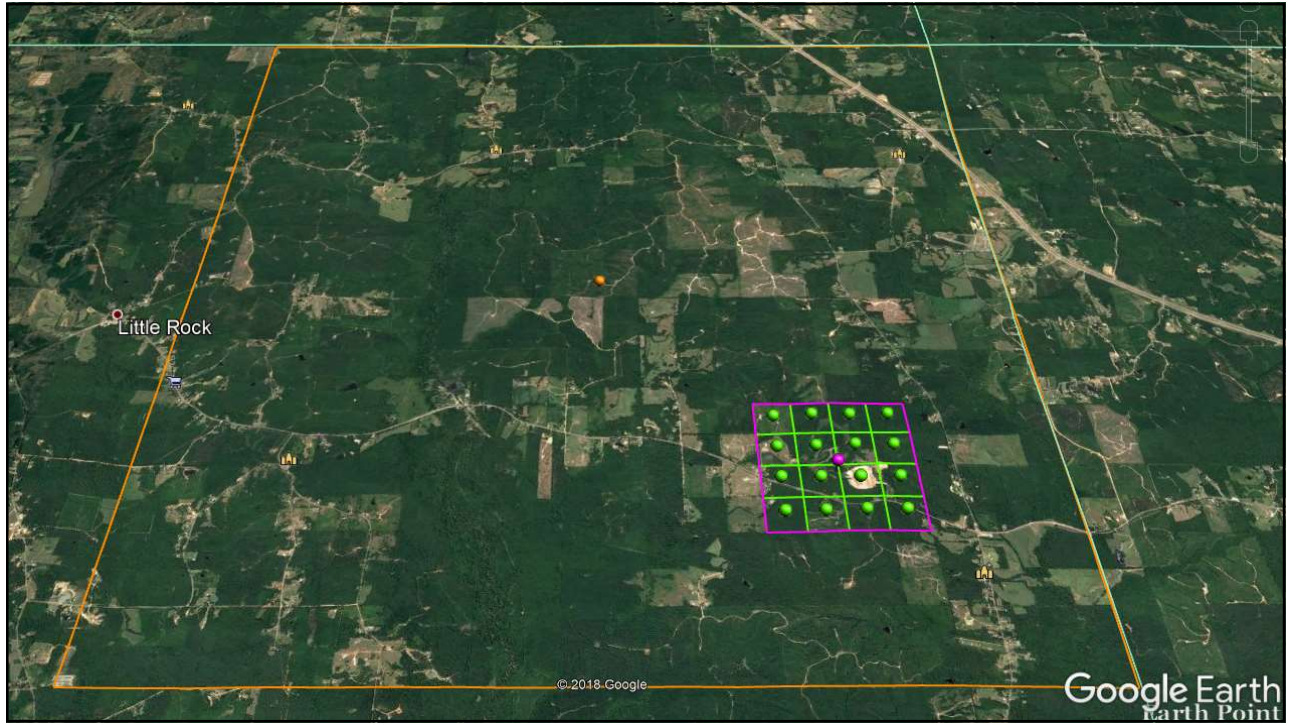
A user account is **not** needed for the features on this web page.

Enter Township and Range. Optionally enter Section. Google Earth flies you there using BLM data. Hint: pause for a moment after choosing each of the criteria. This allows the data to be loaded into the drop-down boxes.

State	<input type="text" value="Mississippi"/>	▼
Principal Meridian	<input type="text" value="(any)"/>	▼
Township	<input type="text" value="008 N"/>	▼
Range	<input type="text" value="013 E"/>	▼
Section	<input type="text" value="026"/>	▼ (optional)

Free. User account is not needed.

If you want to see the surrounding townships, then once you have clicked the "Fly To" button, come back and click the BLM or National Atlas "View on Google Earth" button. Free. User account is not needed.




TRI-STATE CONSULTING SERVICES, INC.

Mississippi

Counties

Adams	Greene	Lee	Rankin	Yalobusha
Alcorn	Grenada	Leflore	Scott	Yazoo
Amite	Hancock	Lincoln	Sharkey	
Attala	Harrison	Lowndes	Simpson	
Benton	Hinds	Madison	Smith	
Bolivar	Holmes	Marion	Stone	
Calhoun	Humphreys	Marshall	Sunflower	
Carroll	Issaquena	Monroe	Tallahatchie	
Chickasaw	Itawamba	Montgomery	Tate	
Choctaw	Jackson	Neshoba	Tippah	
Claiborne	Jasper	Newton	Tishomingo	
Clarke	Jefferson	Noxubee	Tunica	
Clay	Jefferson Davis	Oktibbeha	Union	
Coahoma	Jones	Panola	Walthall	
Copiah	Kemper	Pearl River	Warren	
Covington	Lafayette	Perry	Washington	
DeSoto	Lamar	Pike	Wayne	
Forrest	Lauderdale	Pontotoc	Webster	
Franklin	Lawrence	Prentiss	Wilkinson	
George	Leake	Quitman	Winston	

[Purchase County Data](#)



Tristate Consulting Services, Inc.

MISSISSIPPI GEOSPATIAL CLEARINGHOUSE

MISSISSIPPI Geospatial Clearinghouse

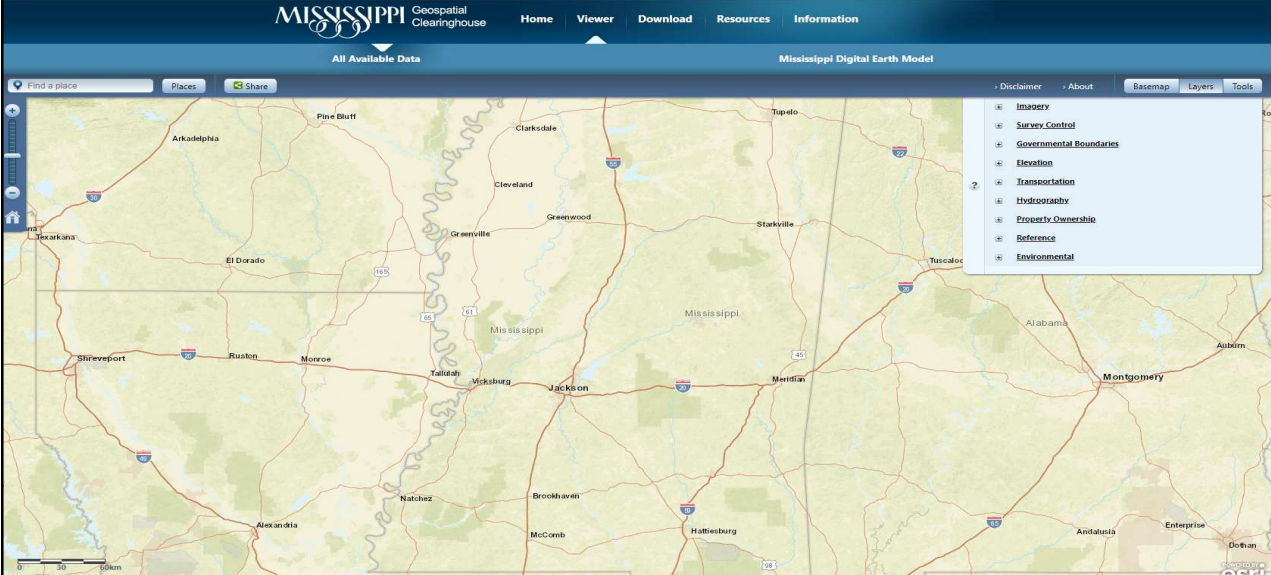
Home Viewer Download Resources Information

All Available Data Mississippi Digital Earth Model

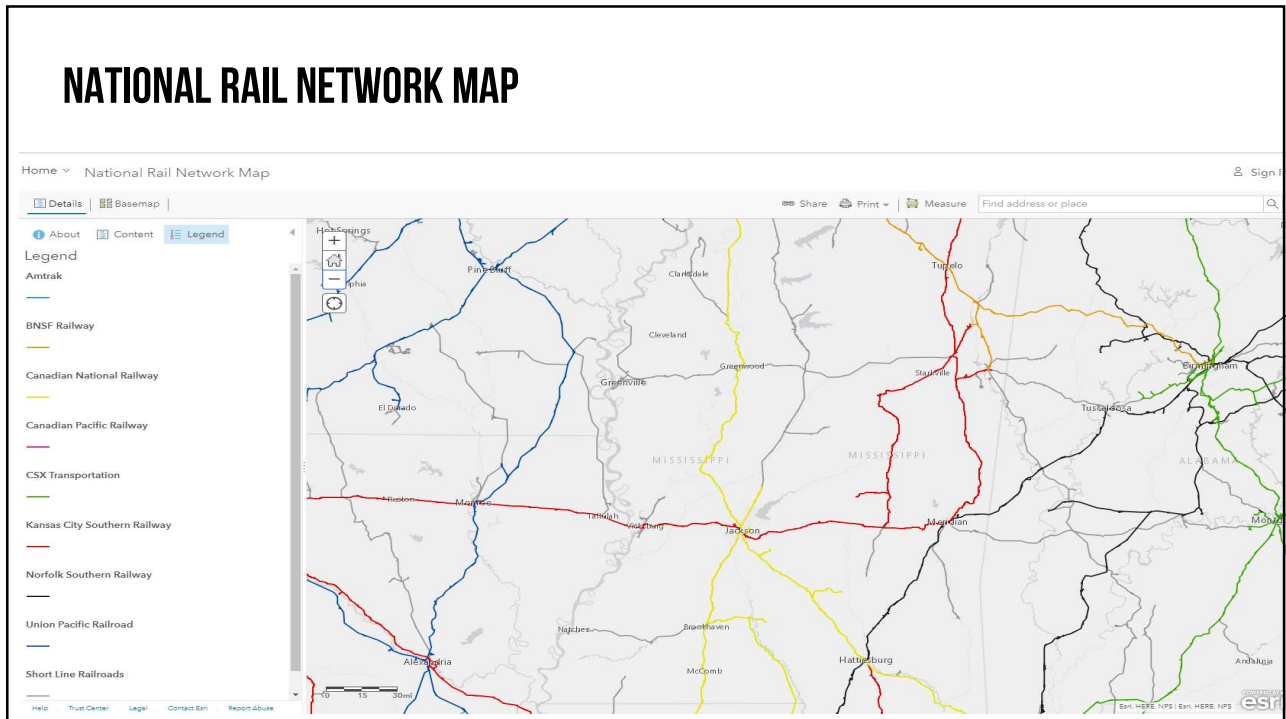
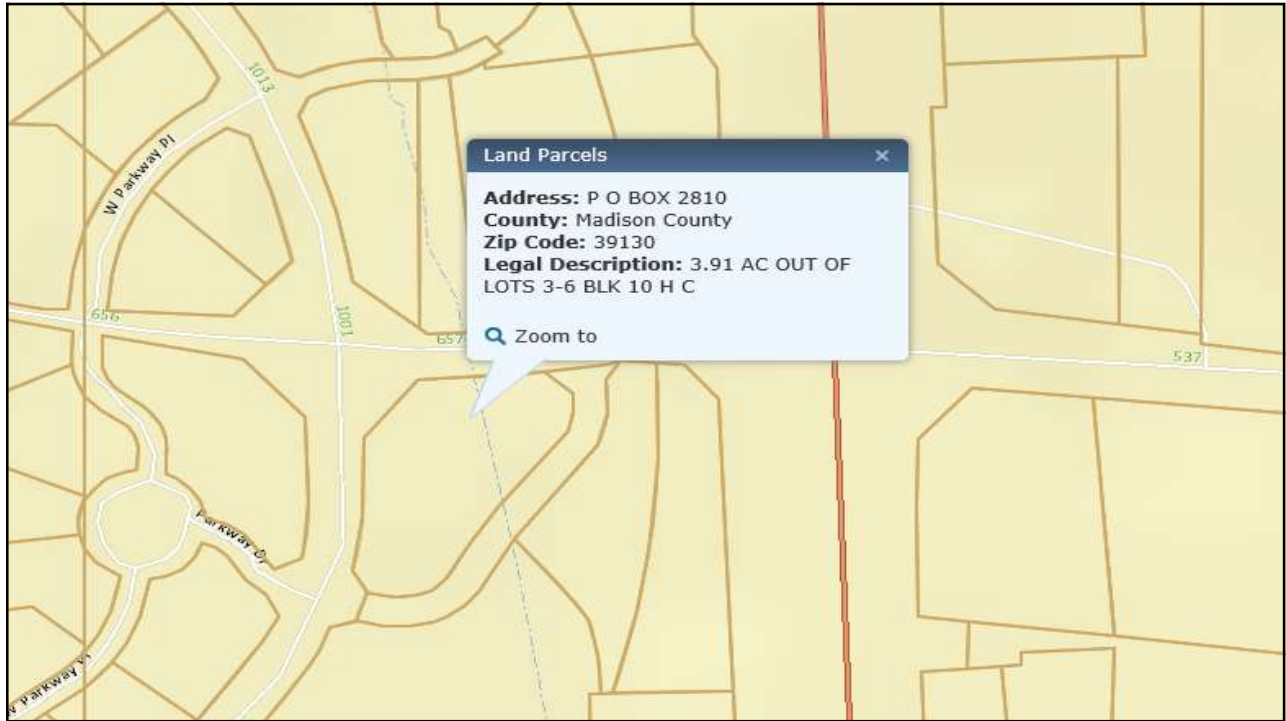
Find a place Places Share

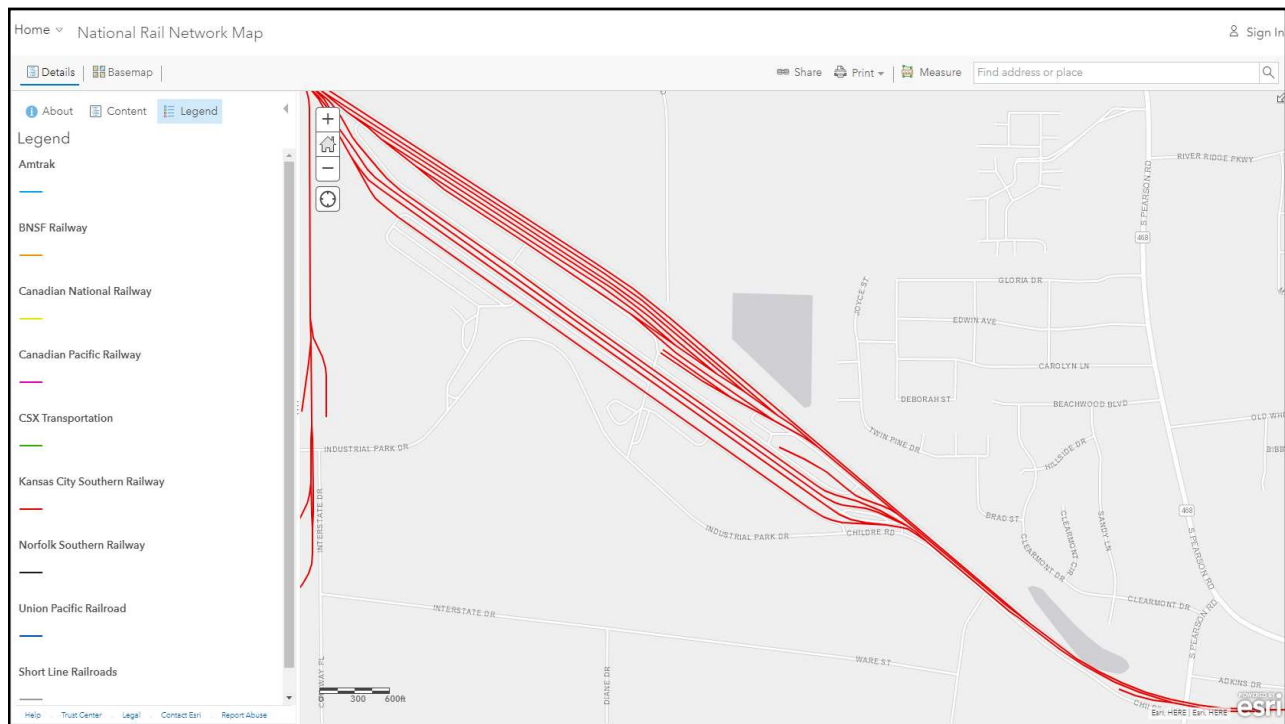
Disclaimer About Basemap Layers Tools

- Imagery
- Survey Control
- Governmental Boundaries
- Elevation
- Transportation
- Hydrography
- Property Ownership
- Reference
- Environmental



Esri, HERE, Garmin, NGA, USGS, NPS





ACRE VALUE

AcresValue

Map Plans Pro Help Log In Sign Up

LAYERS: Parcels CLUs Land for Sale Sold Land [Draw a Custom Boundary >](#)

STATE: Search COUNTY: Search TOWNSHIP: Search SECTION: Search PARCEL NUMBER: Search OWNER: Search ACRES: Min ac Max ac [More Pro Filters](#) Clear

Showing all Parcels. [0 FIELDS](#) [Get Full Report](#)

Enter a county, township, city, or address

Mississippi plat map and land ownership

COUNTIES 71
FIELDS 893,178

COUNTIES	PARCELS
Adams County	6,708
Alcorn County	11,483
Amite County	13,630
Benton County	6,527
Carroll County	8,760

Hybrid Map

Showing all Parcels.

Newton, MS 39345, USA

PARCEL

ACREVALUE n/a

ACRES 30.3

NCCPI 48

OWNER (05/18/16) [Log in to view](#)

OWNER ADDRESS [Upgrade to view](#)

SLOPE 17.8%

2017 CROPS

Forest	84.8%
Non-Cropland	14.6%
Other	0.6%

LOCATION Newton County, MS 8N 13E - 26

PARCEL ID 139R-26-00-006.00

[Get Full Report](#)

[Claim this land as your property](#)

1 FIELD [Get Full Report](#)

Selected Field 30 ac [Clear All](#)

ACREVALUE	n/a
ACRES	30.3 ac
LOCATION	Newton County, MS 8N 13E - 26
PARCEL ID	139R-26-00-006.00

AcreValue provides valuation, soil survey, and crop history reports for individual fields of farmland. Our valuation model utilizes over 20 field-level and macroeconomic data variables to estimate the value of an individual plot of farmland in California, Illinois, Indiana, Iowa, Michigan, Minnesota, Nebraska, Ohio, and Wisconsin. Soil information is sourced from the SSURGO database developed by the National Cooperative Soil Survey. Crop history information is sourced from the NASS Cropland Data Layer (CDL).

[About](#) / [FAQ](#) / [Granular](#)

All Rights Reserved
Terms of Service
Privacy



IDENTIFYING AND LOCATING LENDERS

- MERS Servicer Id
- FFIEC: National Information Center
- FDIC Bank Find
- Payoff Assist | Lane Guide
- Mississippi Secretary of State



MERS SERVICER ID



The Mortgage Industry's Utility

MERS® ServicerID

Search for servicer information

● **Search by MIN**

Search by a MERS® System Mortgage Identification Number.

● **Search by Property Address/Borrower Details**

Search by property address and borrower information.

● **Search by FHA/VA/MI Certificate**

Search by Federal Housing Administration / Veterans Administration Case Number or Mortgage Insurance Certificate Number.

Need help? 


FDIC BANK FIND

AmSouth Bank (FDIC # 26800)

Inactive as of November 4, 2006

Merged or acquired without government assistance

Data as of: August 21, 2019

AmSouth Bank is no longer doing business under that name because it has been merged or acquired without government assistance. See the successor institution, [Regions Bank \(FDIC #: 12368\)](#) 

FDIC Certificate#:	26800	Established:	October 14, 1986	Contact the FDIC about:
Headquarters:	1900 Fifth Avenue, North Birmingham, AL 35203 Jefferson County	Insured:	October 14, 1986	AmSouth Bank or Regions Bank
		Bank Charter Class:	Member of the Federal Reserve System	

THANK YOU FOR YOUR ATTENTION!

Brad Jones

Vice President | Claims Counsel

Mississippi Valley Title

Old Republic National Title Insurance Company

601.961.4866

bjones@mvt.com

